



**RMIG** City Emotion

we make ideas come to life



L'École Internationale Edward Steichen

# A school in harmony with the surroundings

USING RMIG IMAGEPERF, A PHOTO OF A SPRING FOREST MAKES THE HIGH SCHOOL OF CLERVAUX BLEND IN PERFECTLY WITH THE ARDENNES WOODLAND

## THE FACTS BEHIND THE SOLUTION

The architects not only devised a plan for the buildings, but also an idea for decorative facades and sun protection. RMIG ImagePerf made it possible to realise their vision.

- Raw material: Aluminium EN 5005
- Pattern: RMIG ImagePerf
- Thickness: 3.0 mm
- Surface treatment: Anodising
- Finishing operation: Bending
- Perforated area: 1.000 m<sup>2</sup>
- Architect: Jonas Architectes Associés, Luxembourg





## EXPRESSIVE ARCHITECTURE

L'École Internationale Edward Steichen is a high school in Clervaux, Luxembourg, with room for 650 students. Jonas Architectes Associés won the assignment and wanted to give the building an aesthetic expression. In close collaboration with RMIG, it was decided that the facade should be made from perforated panels in EN 5005 aluminium, which were anodised for durability.

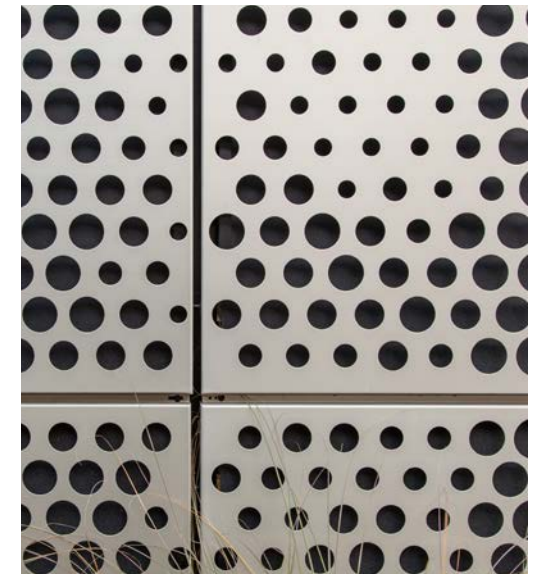
Projects involving installation of large numbers of perforated products require expertise and experience. In addition to the manufacturing, anodising and picture perforation, RMIG was also responsible for the bending and numbering of the 470 individual metal sheets in order to make them ready for delivery. Today, the finished building blends in well with the landscape.



## PERFORATION AND IMAGES

RMIG ImagePerf converts perforated metal into a 'projection screen' for art, photographs, illustrations and graphic designs. As the school is more or less surrounded by woodland on all sides, a striking photo of a spring forest from a nature park in the Ardennes was chosen as the template for the facade image. Using perforation in various hole sizes, the beautiful image of the forest was transferred on to metal sheets.

The photograph is depicted in its entirety on the facade of the large sports complex. It is partially reproduced on the perforated facade of the rest of the building, where the panels also function as a sustainable form of sun screens that reduces the need for expensive cooling inside.





## More than just buildings

RMIG City Emotion is for everyone who values the beautiful and innovative qualities of our cities, because a city is not just about buildings. A city is a place for emotion and it requires our full attention to unleash its aesthetic appeal.

RMIG City Emotion captures the passion for creative urban design by offering innovative technologies and materials. We can help you realise the most ambitious architectural projects and their emotional potential.

- Let us guide you through the benefits and practicality of your design
- We can work on your drawings in CAD, 2D and 3D formats
- Use perforated sheets, embossed sheets or expanded metal
- Enjoy the unique finishing operations and surface treatments

RMIG is the world's largest manufacturer and supplier of perforated metal. In addition to exterior cladding, the company also supplies products for a large number of construction applications such as car park and security screening, acoustic wall linings, ceilings, lighting, street furniture, balustrades and walkways.

**Austria** +43 2256 62482  
info.at@rmig.com

**Belgium** +32 53 76 77 40  
info.be@rmig.com

**Denmark** +45 44 20 88 00  
info.dk@rmig.com

**France** +33 4 72 47 43 43  
info.fr@rmig.com

**Germany** +49 34 906 50 0  
info.de@rmig.com

**Italy** +39 010 740 3939  
info.it@rmig.com

**The Netherlands** +31 184 491 919  
info.nl@rmig.com

**Norway** +47 33 33 66 66  
info.no@rmig.com

**Poland** +48 61 88 63 270  
info.pl@rmig.com

**Sweden** +46 501 682 00  
info.se@rmig.com

**Switzerland** +41 62 287 88 88  
info.ch@rmig.com

**United Kingdom** +44 1925 839 610  
info.uk@rmig.com

**Other locations** +45 44 20 88 00  
info@rmig.com

